

# **56K USB Modem**

Conexant HSF V.90

**User's Guide**

## FCC Requirements

This equipment complies with Part 68 of the FCC Rules. On the bottom of this equipment is a label that contains, among other information, the FCC Registration Number and Ringer Equivalence Number (REN) for this equipment. IF REQUESTED, THIS INFORMATION MUST BE GIVEN TO THE TELEPHONE COMPANY.

The REN is useful to determine the quantity of devices you may connect to your telephone line and still have all of these devices ring when your telephone number is called. In most, but not all areas the sum of the REN's of all devices connected to one line should not exceed five (5.0). To be certain of the number of devices you may connect to your line, as determined by the REN. You should contact your local telephone company to determine the maximum REN of the area you are calling from. If your telephone equipment causes harm to the telephone network. The telephone company may discontinue your service temporally. If possible, they will notify you in advance. But if the advanced notice is failed, you will be notified as soon as possible. You will be informed of your right to file a complaint with the FCC.

Your telephone company may change in its facilities, equipment, operations or procedures that could affect the proper functions of your equipment. If this occurs, you will be notified in advance to give you an opportunity to maintain uninterrupted telephone service.

If you experience trouble with this telephone equipment, please contact the following address and phone number for information on obtaining service or repairs. The telephone company may ask you to disconnect this equipment from the network until the problem is solved or until that the equipment is not detected malfunctioning. This equipment may not be used on coin service provided by the telephone company. Connection to party lines is subject to state Tariffs.

### **Federal Communications Commission**

#### **Radio Frequency Interference Statement.**

Note: This equipment has been tested and found to comply with the limitation for a class B digital device pursuant to Part 15 of the FCC Rules. These restrictions are designed to provide reasonable protection against harmful interference when the equipment is operated in a residential installation. This equipment generates, uses, and can radiate radio frequency energy and if not installed and used in accordance with the instruction manual may cause harmful interference to radio communications. However, there is no guarantee that interference will not occur in a particular installation. If the equipment does cause harmful interference to radio or television reception, which can be determine by tuning the equipment off and on, the user is suggested to try to correct the interference by one or more of the following measures:

- Reorient or relocate the receiving antenna.
- Increase the distance between the equipment and receiver.
- Connect the equipment into an outlet on a circuit different from that to which the receiver is connected. Consult the dealer or an experienced radio TV technician for help.

Notices:

- (1) The changes or modifications not expressly approved by the party responsible for Compliance could void the user's authority to operate the equipment.
- (2) Shielded interface cables and AC power cord if any must be used in order to comply with the emission limits.

**Notices to Australian users:**

The modem card must only be used in a data terminal equipment (DTE) e.g. computer, that has a screw down cover (lid). As unsafe voltages (TNV) exist on the modem card, disconnect the modem card from the telephone line while the cover (lid) of the DTE (computer) is removed.

Installation of the modem card in a DTE (computer) which does not require a tool to open the cover (lid) will render the permit void.

Disconnect the telephone line before opening the cover (lid) of the DTE (computer). Do not connect the customer equipment to the telephone line while the cover (lid) of the DTE (computer) is open.

WARNING  
ONLY CONNECT EQUIPMENT WITH A TELECOMMUNICATIONS  
COMPLIANCE LABEL

WARNING  
FOR SAFETY REASONS, ONLY CONNECT EQUIPMENT WITH A  
TELECOMMUNICATIONS COMPLIANCE LABEL. THIS INCLUDES  
CUSTOMER EQUIPMENT PREVIOUSLY LABELLED  
PERMITTED OR CERTIFIED.

Modems connected to the Australian telecommunications network must be marked in accordance with the Labeling Notice. This modem has been specifically configured to ensure compliance with the ACA Standards. Do not adjust your modem or software outside the values indicated as below. To do so would result in your modem being operated in a non-compliant manner.

**Modem Commands:**

<u>Command</u>	<u>Default</u>	<u>Permissible Range</u>
ATA	Do not use	
ATB	B0	Do not set to B1
AT&G	&G0	&G2
AT&P	&P0	&P1
ATSn	see table below	
<u>S register</u>	<u>Default</u>	<u>Permissible Range</u>
S6	2	2 to 6

**Call Attempts/Retries:**

Applications software shall be configured so that no more than 3 attempts are made to establish a connection to a given number (Note: if the modem can detect service tones, up to 10 attempts can be made). If the call sequence is unsuccessful, there shall be a delay of at least 30 minutes before attempting to call the number again.

Failure to set the modem and any application software used with the modem, to the values shown as above will result in the modem being operated in a non-compliant manner. Consequently, this would be in violation of the Labeling Notice for this equipment, and the Telecommunications ACT 1997 prescribes penalties for the connection of non-compliant equipment .

## TABLE OF CONTENTS

Chapter 1 Introduction.....	5
1.1 Introduction .....	5
1.2 Features .....	5
1.3 What's in the Package.....	5
Chapter 2 Specifications .....	6
2.1 Specifications .....	6
2.2 System Requirements .....	6
Chapter 3 Hardware Installation.....	7
Chapter 4 Software Installation .....	8
4.1 Windows 98SE .....	8
4.2 Windows ME .....	12
4.3 Windows 2K .....	16
4.4 Windows XP .....	20
Chapter 5 Select Modem Country .....	22
5.1 Windows 98SE/ME/2K .....	22
5.2 Windows XP .....	24
Chapter 6 Diagnostics.....	26
6.1 Diagnostics in Windows 98SE/ME .....	26
6.2 Diagnostics in Windows 2K.....	29
6.3 Diagnostics in Windows XP.....	32
Chapter 7 Uninstalling .....	35
7.1 Uninstalling in Windows 98SE/ME .....	35
7.2 Uninstalling in Windows 2K.....	37
7.3 Uninstalling in Windows XP.....	39
Chapter 8 Troubleshooting.....	41

## Chapter 1 Introduction

### 1.1 Introduction

Thank you for choosing this HSF V.90 56K USB Modem. It is not only the most cost-effective solution to connect your PC to the Internet, but also increase the usage of the CPU and decrease the cost of ownership. It reduces the time and pain during installation procedure. All you have to do are just plug & play and inserting the CD-ROM Disk, even that you don't need to turn off the power of your PC. Because it's a really USB device so it supports the fully HOT plug and play function. Furthermore, it follows the K56Flex /V.90 Standard, you can access the Internet at Max. rate 56K bps (It depends on the line condition and the ISP you connected to). If you have a PC system with USB interface, we strongly recommend you to take this modem as your best choice.

### 1.2 Features

USB interface, HOT plug and play, easy to install

ITU 56K V.90 Standard

Windows 98SE /Windows ME/Windows 2K /Window XP compatible

No Extra Power Needs & Low power consumption

Host-Controlled Modem

User Friendly

### 1.3 What's in the Package

Modem Unit

CD-ROM Disk (Comprises Application Software, Modem Drivers & User's Manual)

Telephone cord

Quick Guide for Installing Modem Drivers

## Chapter 2 Specifications

### 2.1 Specifications

Computer Interface USB V1.1

Line Interface RJ-11 for POTS line

Data Protocols V.90, K56flex, V.34, V.32bis, V.32, V.22bis, V.22, V.23, V.21, Bell  
212A and 103

Data Speed 56k, 54k, 52k, 50k, 48k, 46k, 44k, 42k, 40k, 38k, 36k, 34k, 33.6k,  
31.2k, 28.8k, 26.4k, 24k, 21.6k, 19.2k, 16.8k, 14.4k, 12k, 9600, 7200,  
4800, 2400, 1200, 300

Data Compression V.42bis, MNP 5

Error Correction V.42 LAPM, MNP 2,3,4

Fax Protocols Group 3 Compatible, Class 1 fax: V.17, V.29, V.27ter, V.21 ch 2

Fax Speed 14.4k, 12k, 9600, 7200, 4800, 2400, 300

General Standard AT commands, V.8 and Automode, Caller ID, Virtual DTE,  
V.80 Virtual UART (115.2kbps), DTMF detection and generation,  
ADPCM, Answering machine (voice), OnNow Power Management,  
Wake-up on ring , Distinctive ring for data/fax/voice, World wide  
country support

Power Consumption below 700mW

### 2.2 System Requirements

CPU : Pentium 200MHz MMX comptible or greater

RAM : 16Mbyte RAM or more

Interface : USB port

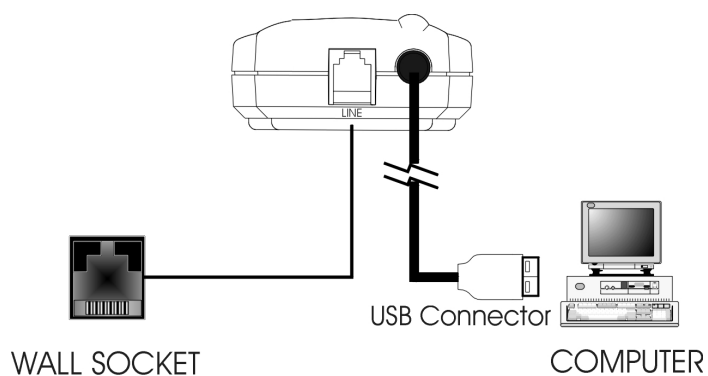
HDD : 2MB free space or above

Telecom Requirement : 1 POTS line

Operation system : Windows 98SE , Windows ME, Windows 2K, Windows XP

## Chapter 3 Hardware Installation

1. Plug the connector of the USB Modem into the USB port of your PC.
2. Plug one end of telephone cord into the modem's "LINE" jack, which is shown on the modem's bracket labeled "LINE".
3. Insert the other end of the cord into the telephone wall socket.
4. Enable the USB port option in the BIOS setup of your computer.



## Chapter 4 Software Installation

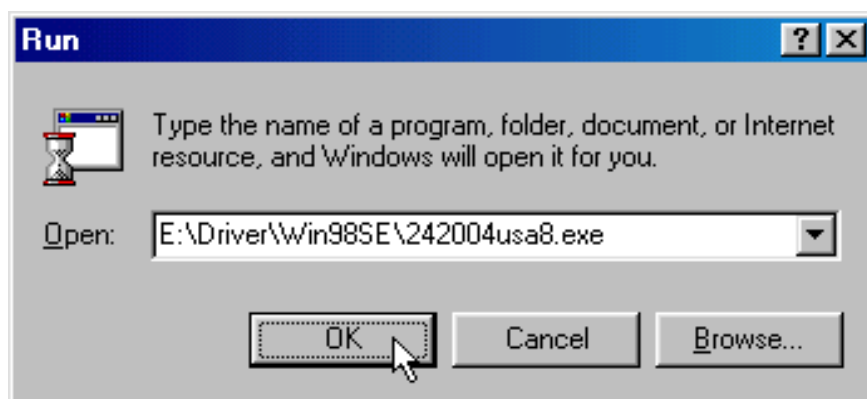
Power on your computer and modem and then start Windows 98SE/ME/2K/XP. Windows 98SE/ME/2K/XP will detect the modem automatically.

### 4.1 Installing in Windows 98SE

1. The computer wizard will find new hardware device, Please click **Cancel** to continue.

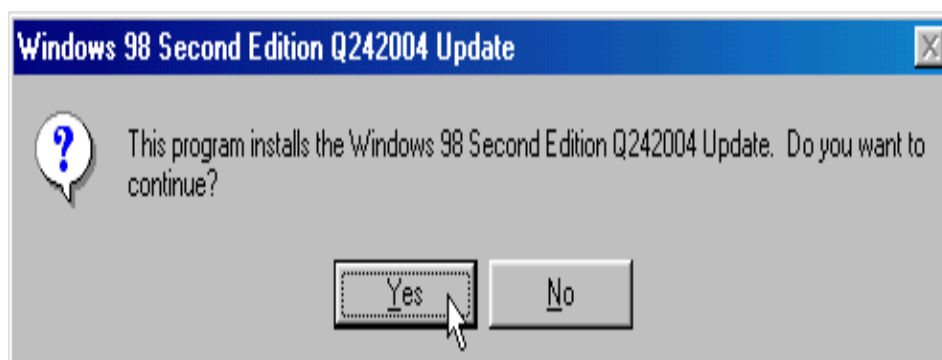


2. Please click **Start \ Run** on the desktop, then type the path:  
**E:\Driver\Win98SE\242004usa8.exe** ( E is the letter of CD-ROM drive ) and click **OK** to continue.

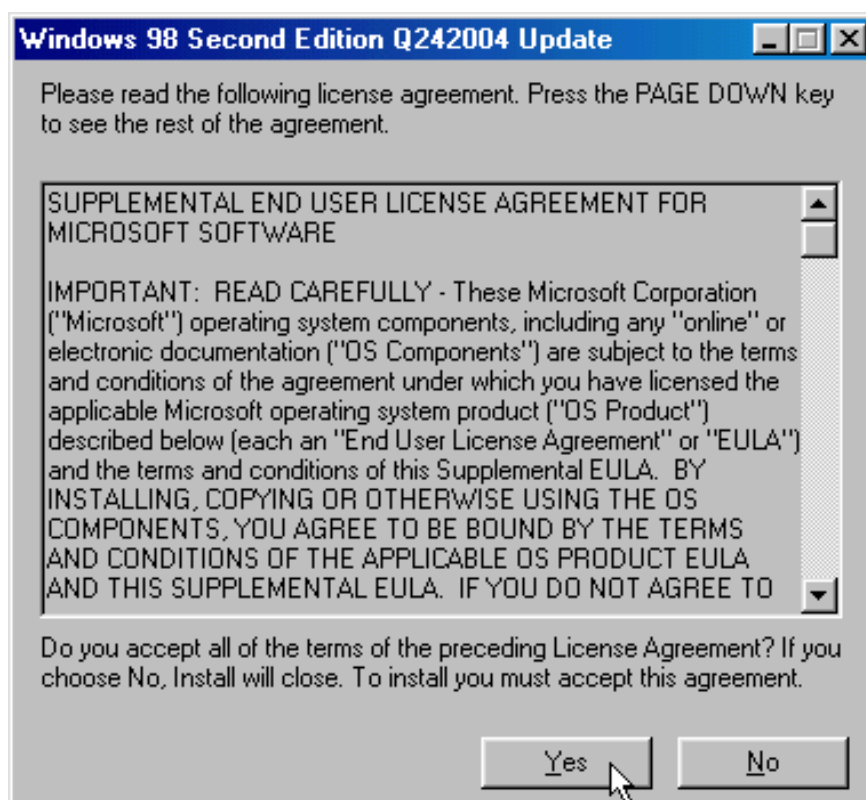




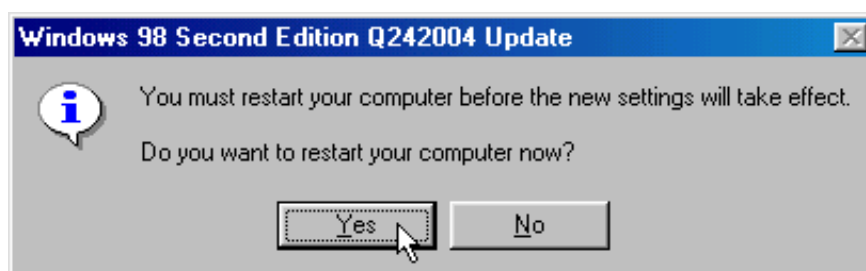
3. Click **Yes**.



4. Click **Yes**.



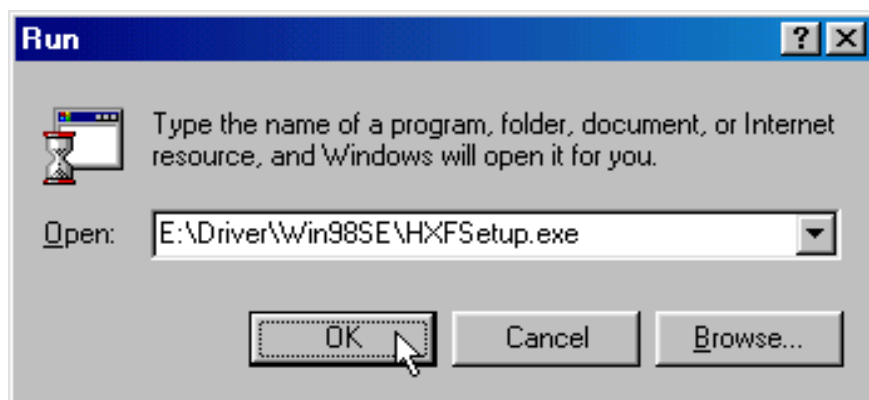
5. Click **Yes**, restart computer now.



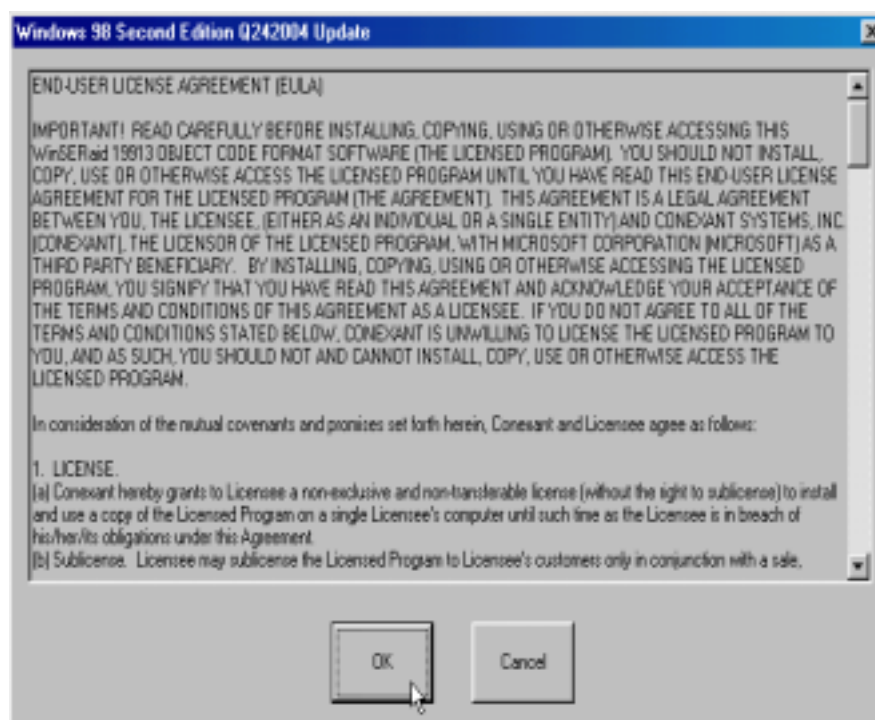
6. The computer wizard will find new hardware device, Please click **Cancel** to continue.



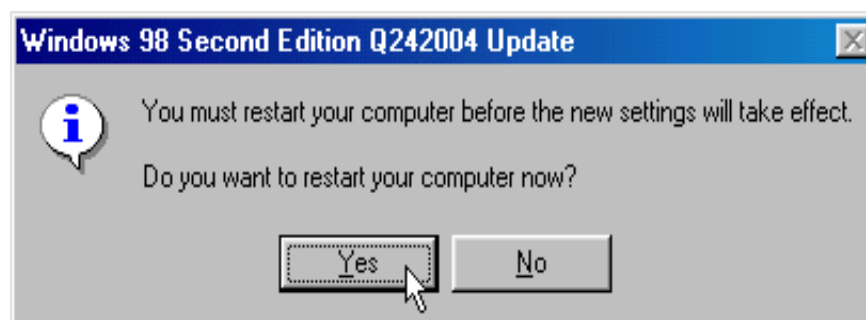
7. Please click **Start \ Run** on the desktop, then type the path:  
**E:\Driver\Win98SE\HXFSetup.exe** ( E is the letter of CD-ROM drive ) and click **OK** to continue.



8. Click **OK**.

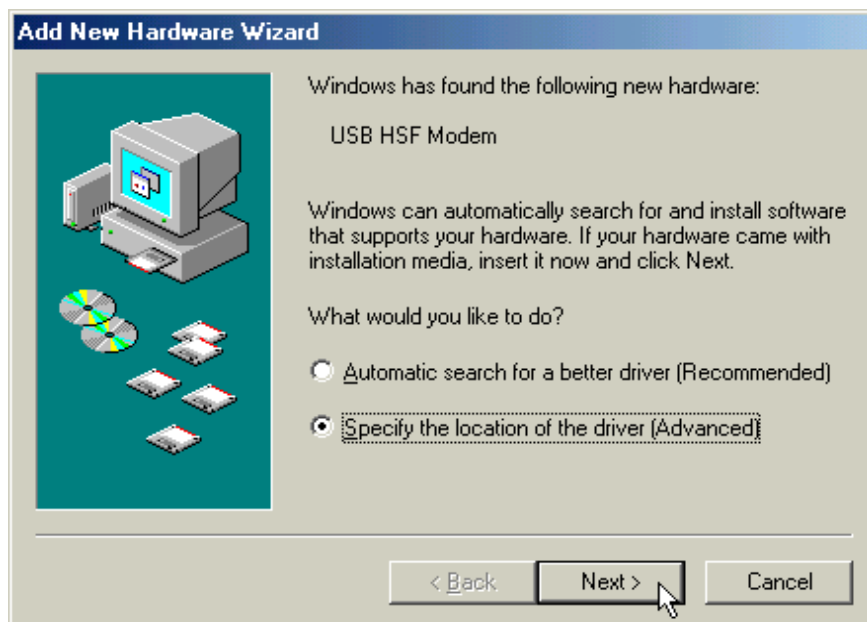


9. Click **Yes** to restart your computer. When the system was reboot and install complete.



## 4.2 Installing in Windows ME

1. The message of **USB HSF Modem** will appear. Select **Specify the location of the driver [Advanced]** and click **Next**.



2. Select **“Search for the best driver for your device. [Recommended]”**, then select **“Specify a location”** and type the path: **H:\Driver\WinME** (H is the letter of CD-ROM drive ) and click **Next** to continue.



- Windows will find the driver for **USB Modem Enumerator** and click **Next**.



- Click **Finish** to end this installation procedure.



5. The message of **Modem Device** will appear. Select **"Specify the location of the driver [Advanced]"** and click **Next**.



6. Select **"Search for the best driver for your device.[Recommended]"**, then select **"Specify a location"** and type the path: **H:\Driver\WinME** (H is the letter of CD-ROM drive ) and click **Next** to continue.



7. Windows will find the driver for **SoftK56 Data Fax CARP** and click **Next**.

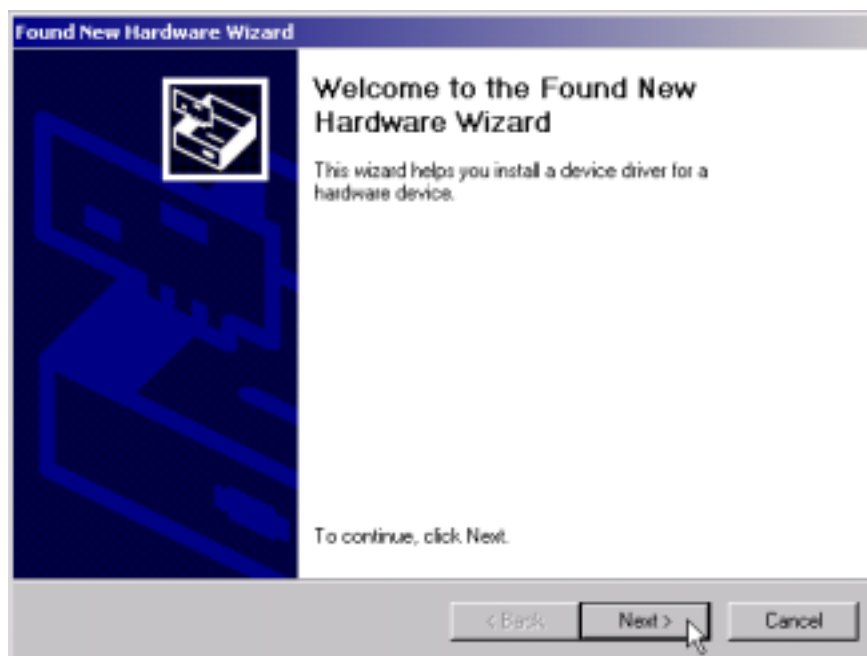


8. Click **Finish** to end this installation procedure.



### 4.3 Installing in Windows 2K

1. Windows will detect the modem automatic; please insert the driver CD supplied and clicks **Next** to continue.

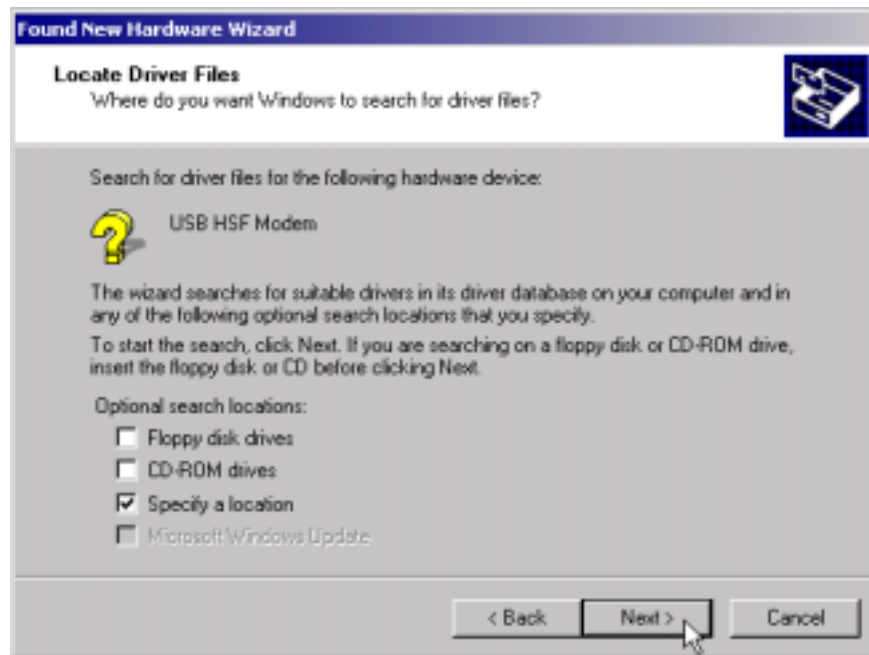


2. Select **“Search for a suitable driver for my device [recommended]”**, and click **Next**.

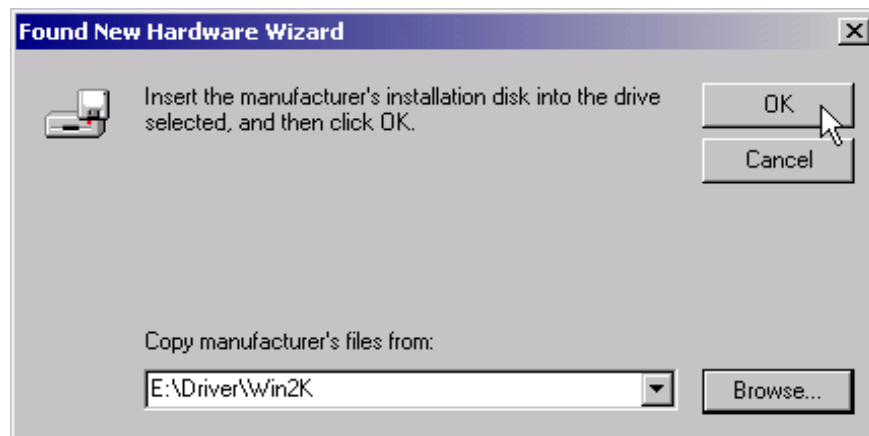




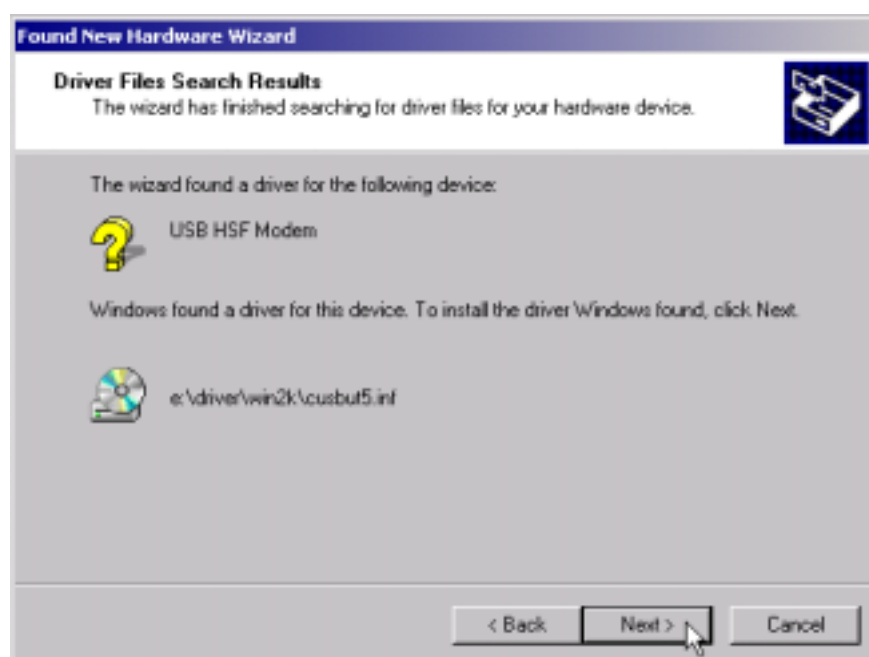
3. Select **Specify a location**, then click **Next** to continue.



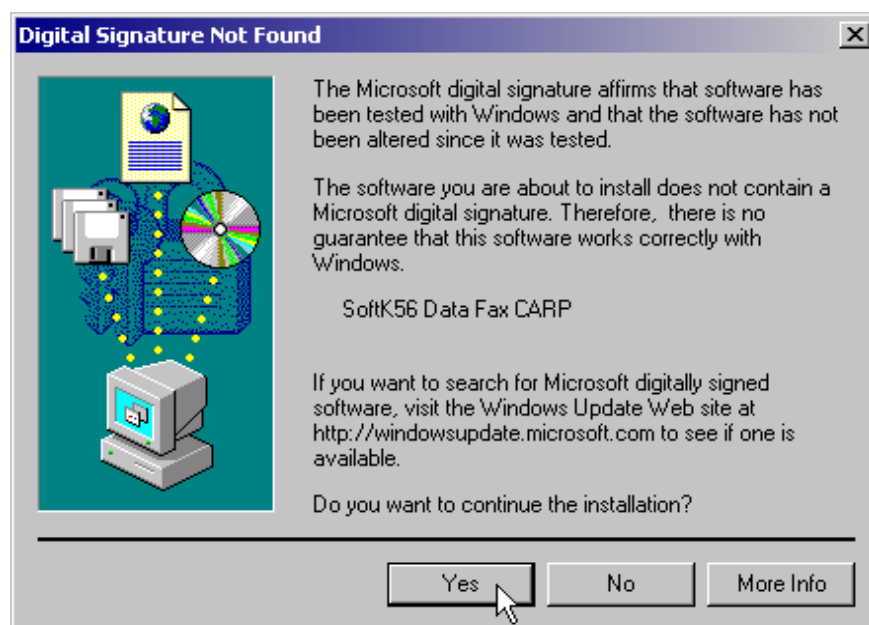
4. Please type the path: **E:\Driver\Win2K** (E is the letter of your CD-ROM driver), then click **OK** to continue.



5. Click **Next** to continue.



6. Click **Yes** to continue.

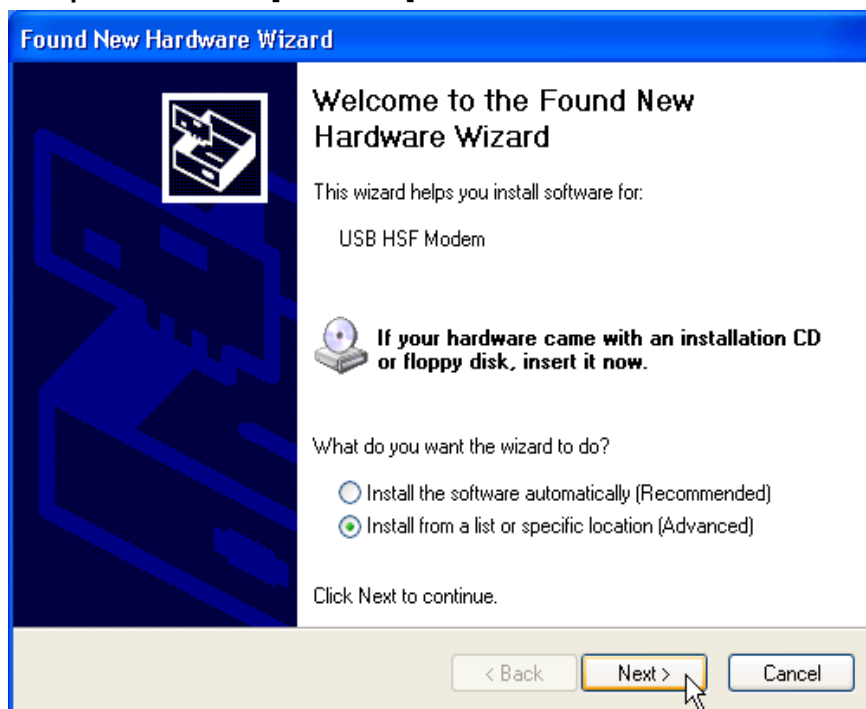


7. Click **Finish** to end procedure.

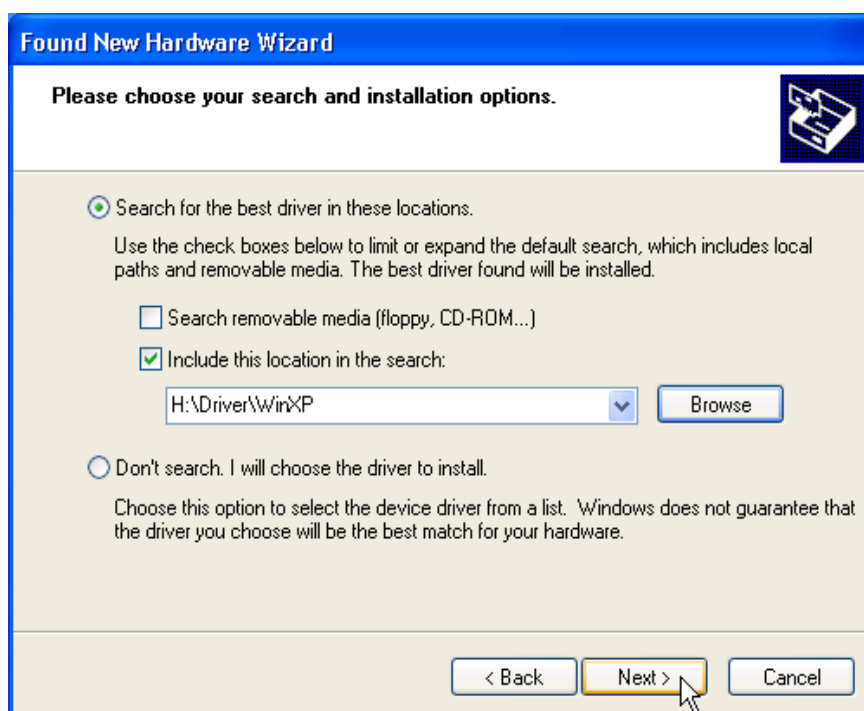


## 4.4 Installing in Windows XP

1. The message of “USB HSF Modem” will appear. Select “Install from a list or specific location [Advanced]” and click **Next**.



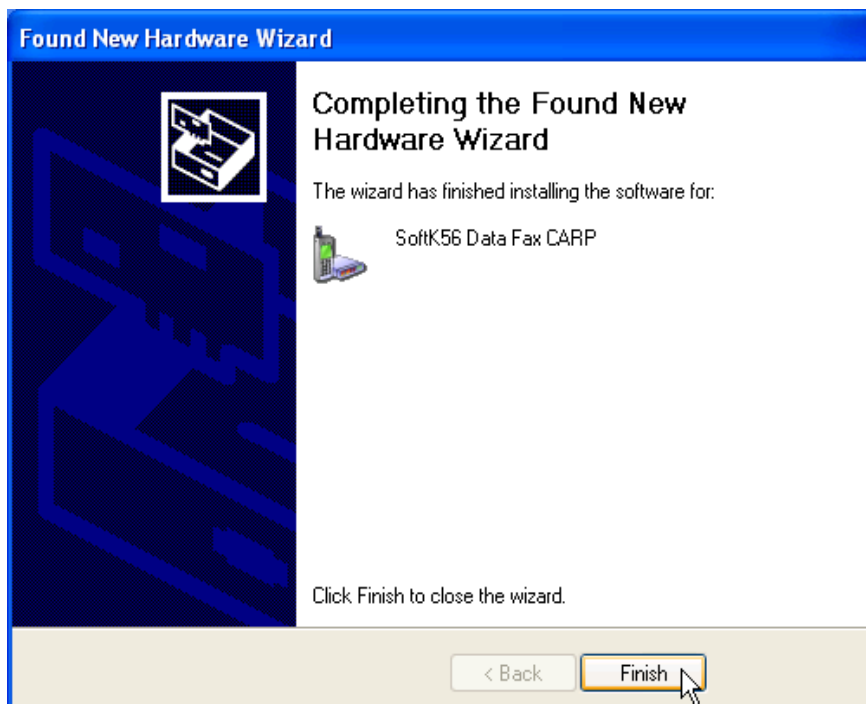
2. Select “Search for the best driver in these locations”. Click “Include this location in the search “ and the path: **E:\Driver\WinXP**. (E is your CD-ROM). Then Click **Next**.



3. Click **"Continue Anyway"**.



4. Click **Finish** to end this installation procedure.



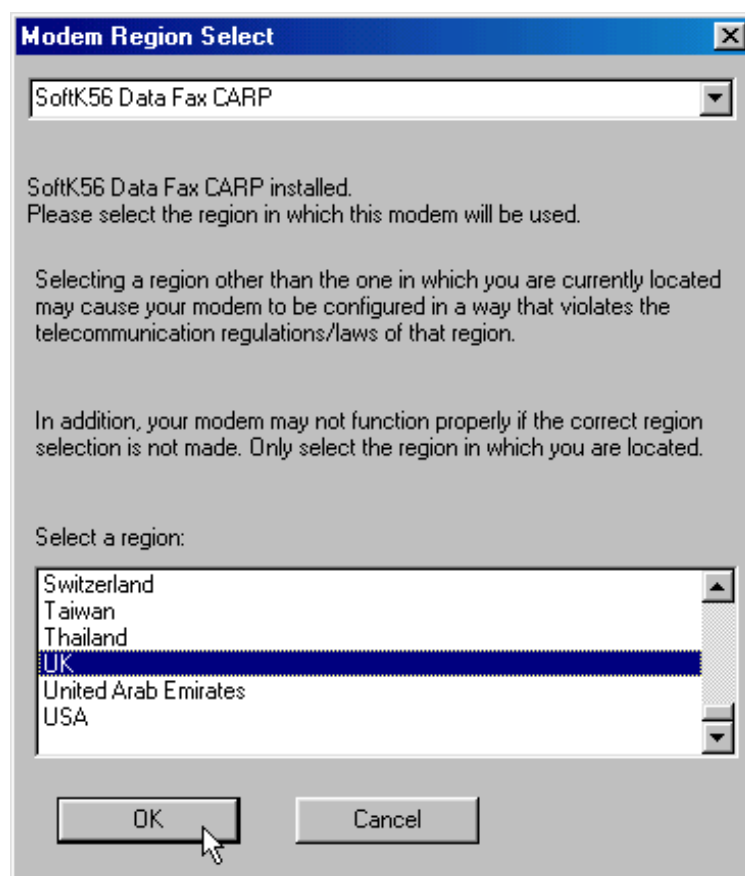
## Chapter 5 Select Modem Country

### 5.1 Select Modem Country in Windows 98SE / ME / 2K

1. To select your country, please click **Start \ Setting \ Control Panel** on the desktop. Then double-click on the **HSF Modem Region Select** icon.



2. Select your country from a list and click **OK**.



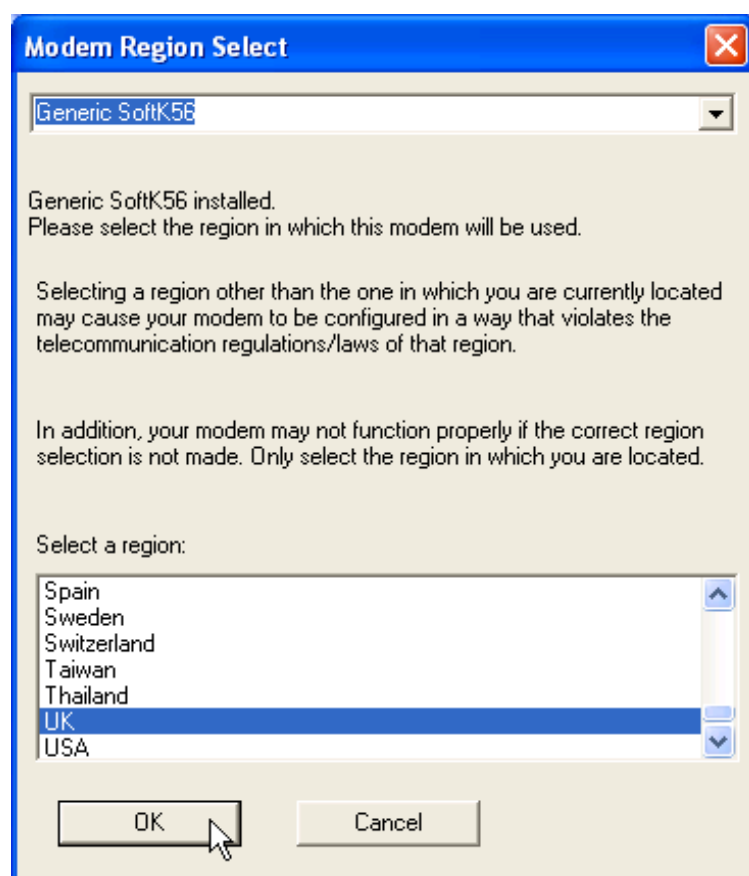
## 5.2 Select Modem Country in Windows XP

1. To select your country, please click **Start \ Setting \ Control Panel** on the desktop. Then double-click on the **HSF Modem Region Select** icon.





2. Select your country from a list and click **OK**.



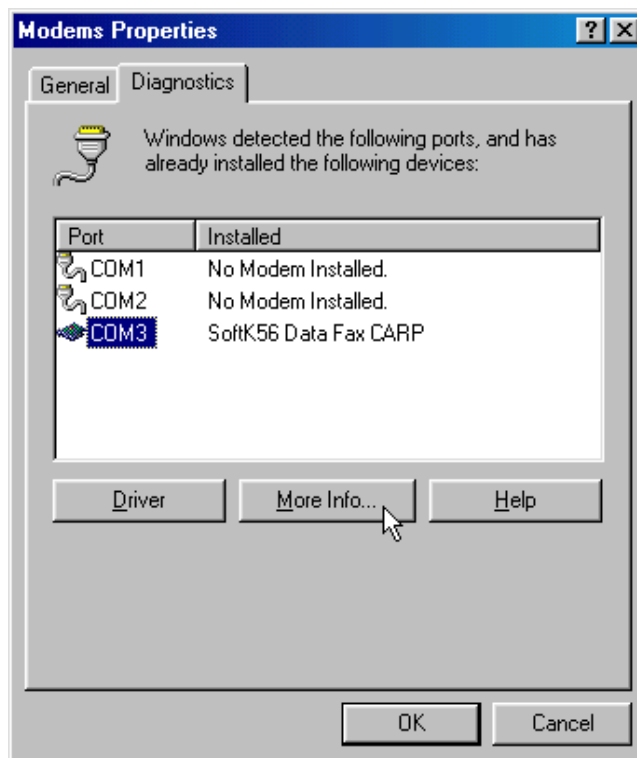
## Chapter 6 Diagnostics

### 6.1 Diagnostics in Windows 98SE / ME

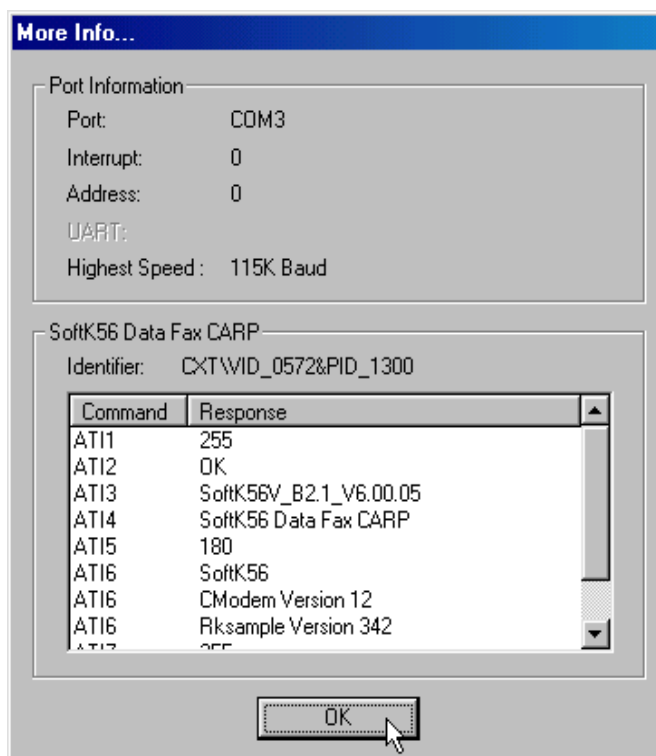
1. Please click **Start \ Setting \ Control Panel** on the desktop and double-click on the **Modems** icon.



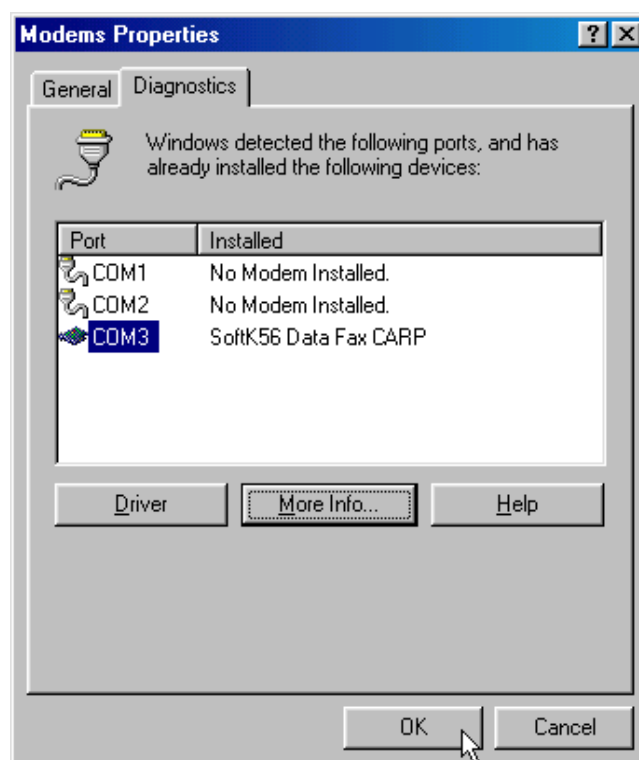
2. To test the modem by clicking on the **Diagnostics** tab. Select the **COM port** that the modem is setting, and clicks **More Info....**



3. If your modem is responding to AT commands and functioning correctly, it means that your modem is working properly. Click **OK** to end this procedure.



4. Click **OK** button to end this procedure.

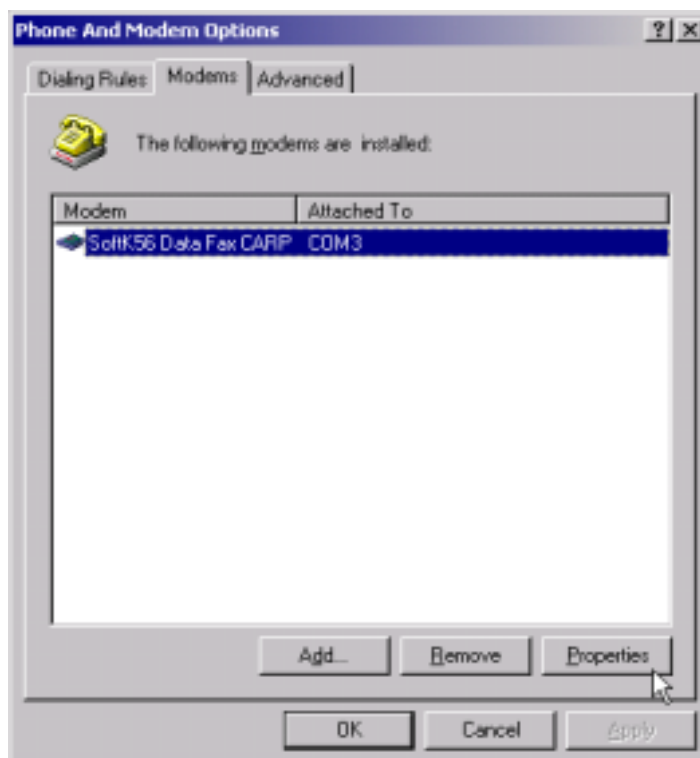


## 6.2 Diagnostics in Windows 2K

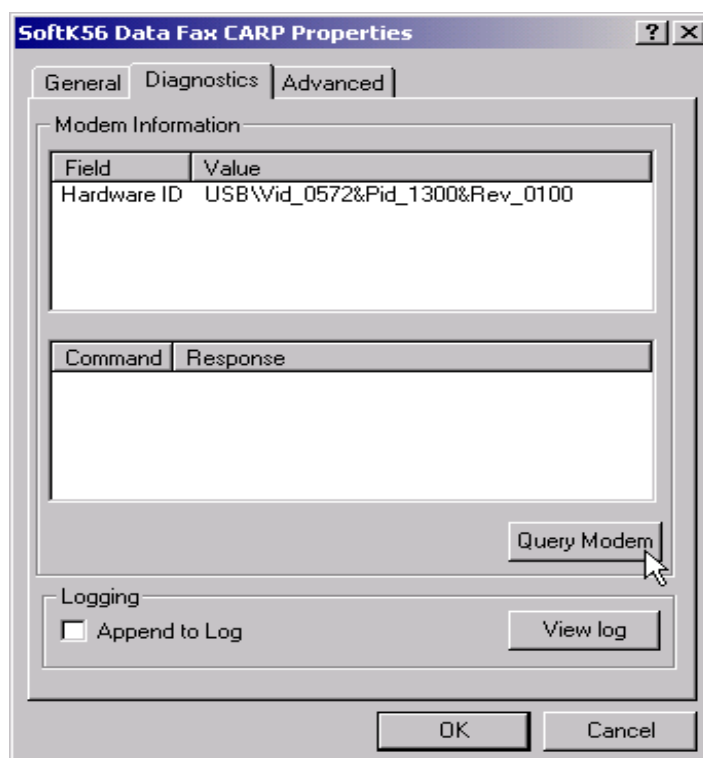
1. Please click **Start \ Setting \ Control Panel** on the desktop and double-click on the **Phone and Modem Options** icon.



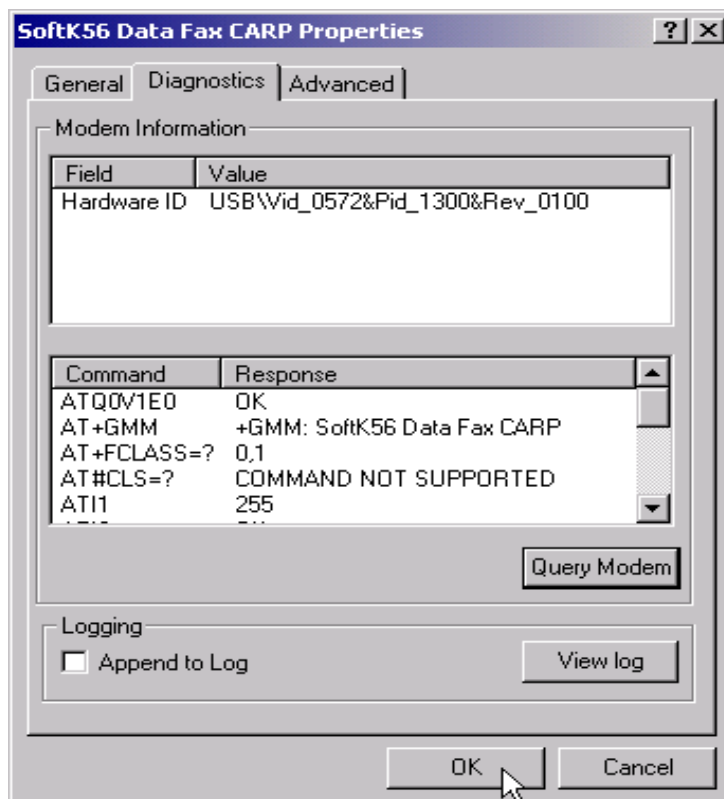
- Click on the **Modems**, then select **SoftK56 Data Fax CARP** and click **Properties**.



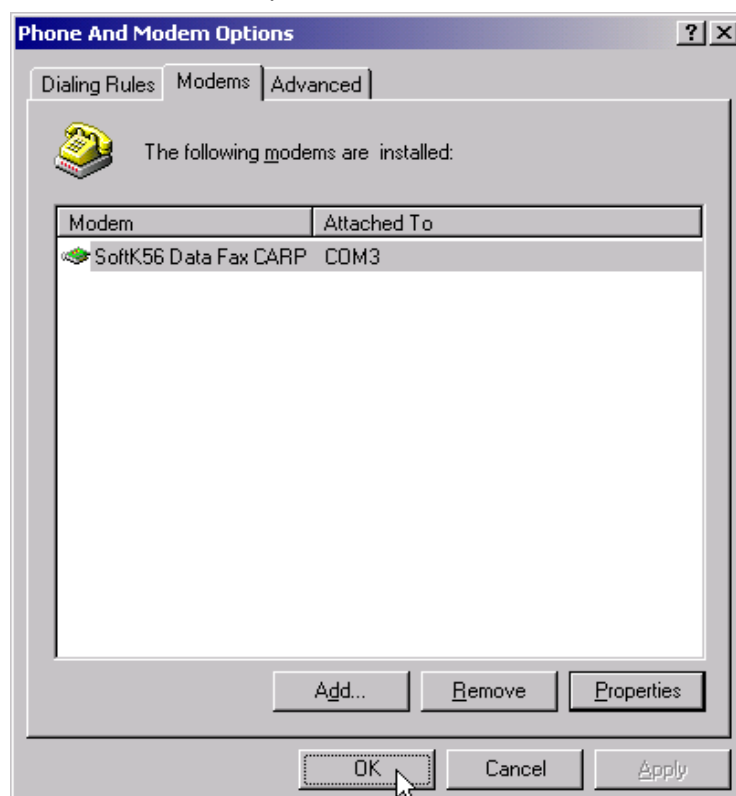
- Click **Diagnostics**. To test the modem by clicking **Query Modem**.



4. If your modem is responding to AT commands and functioning correctly, it means that your modem is working properly. Click **OK** to end this procedure.



5. Click **OK** button to end this procedure.



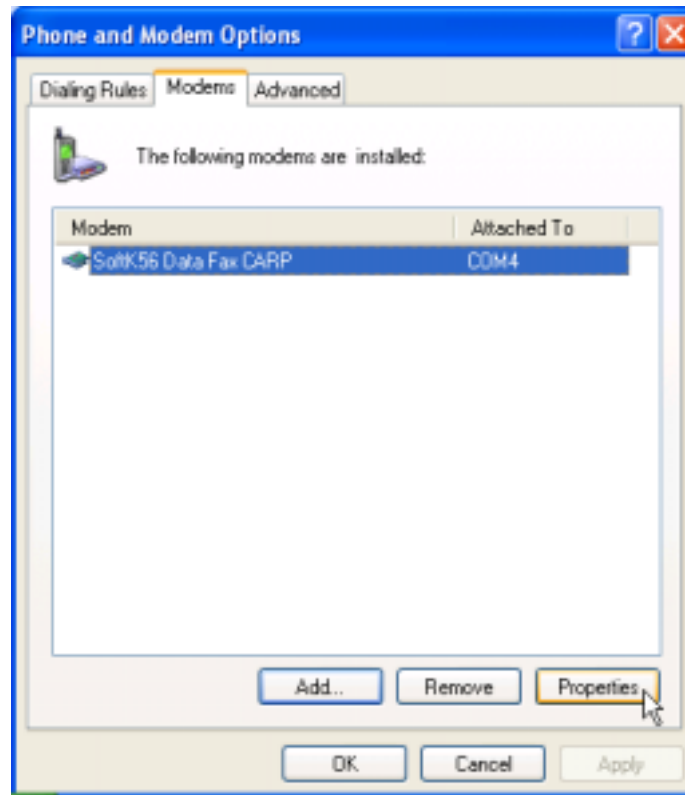
### 6.3 Diagnostics in Windows XP

1. Please click **Start \ Setting \ Control Panel** on the desktop and double-click on the **Phone and Modem Options** icon.

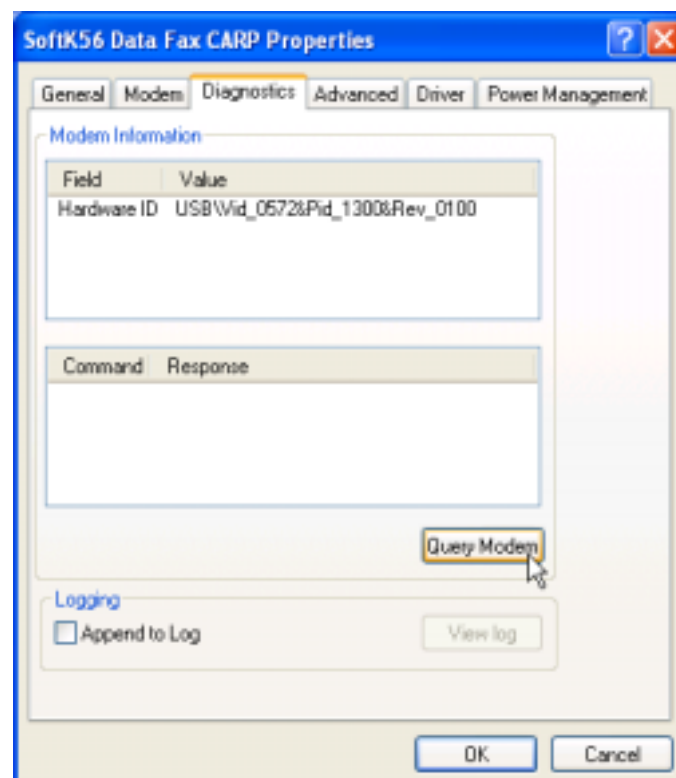




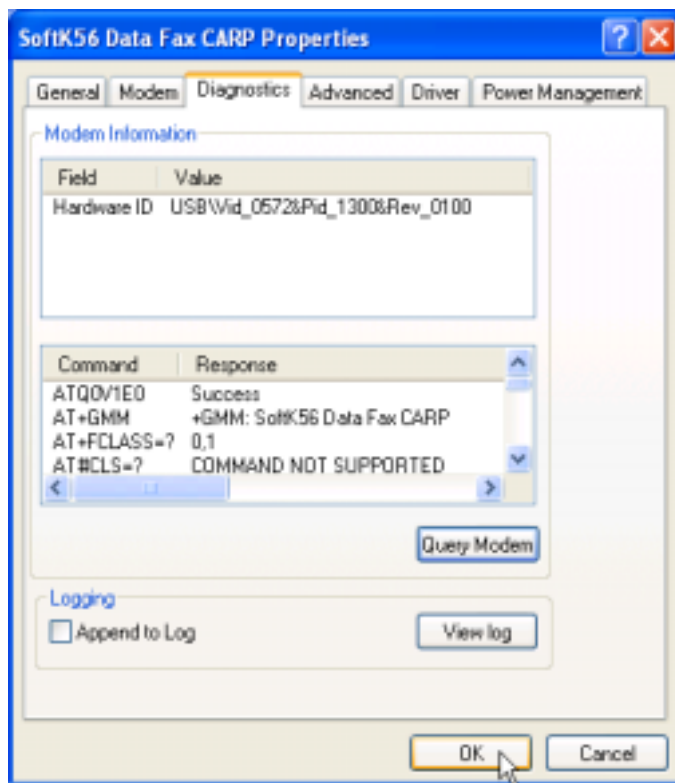
- Click on the **Modems**, then select **SoftK56 Data Fax CARP** and click **Properties**.



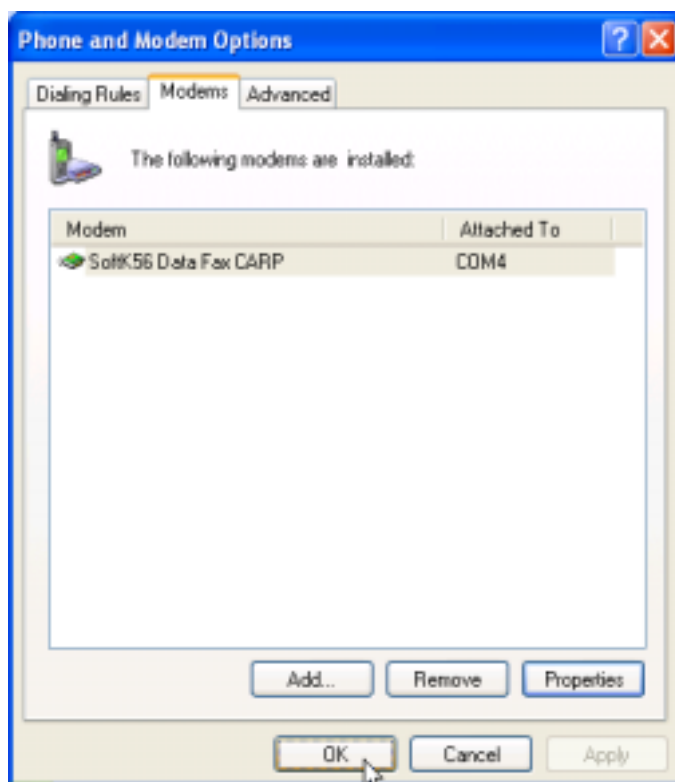
- Click **Diagnostics**. To test the modem by clicking **Query Modem**.



4. If your modem is responding to AT commands and functioning correctly, it means that your modem is working properly. Click **OK** to end this procedure.



5. Click **OK** button to end this procedure.



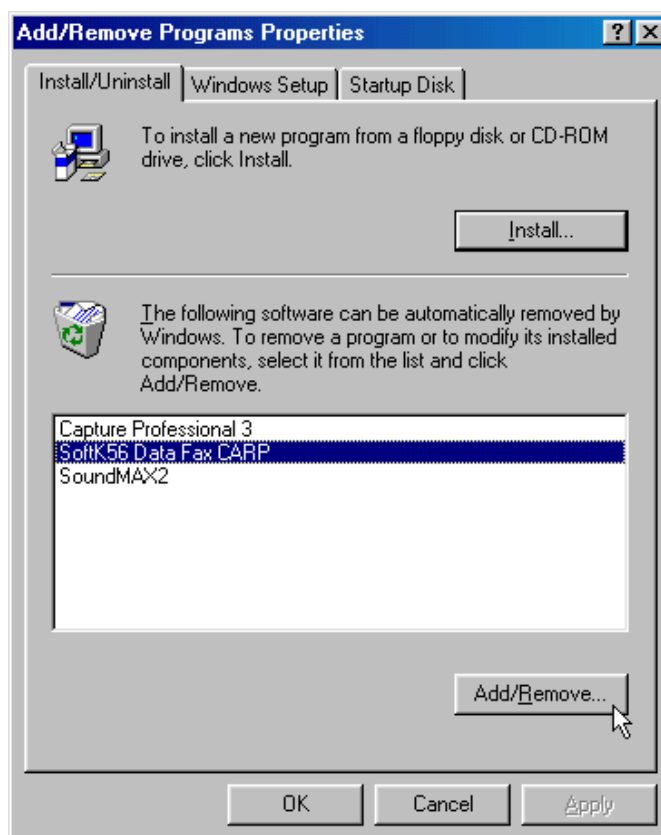
## Chapter 7 Uninstalling

### 7.1 Uninstalling in Windows 98SE / ME

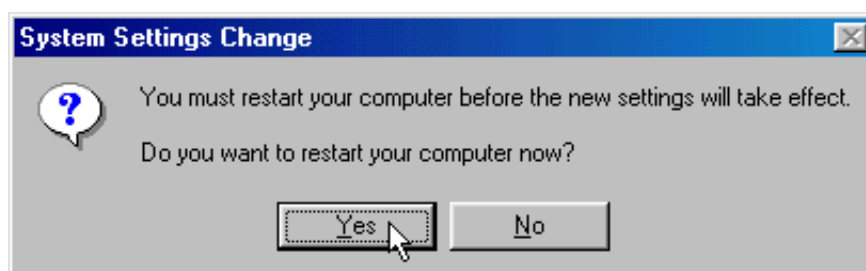
1. Please click **Start \ Setting \ Control Panel** on the desktop and double-click on the **Add/Remove Programs** icon.



2. Select **SoftK56 Data Fax CARP** from the list and then click the **Add/Remove**.



3. Click **Yes** to restart computer and end this procedure.

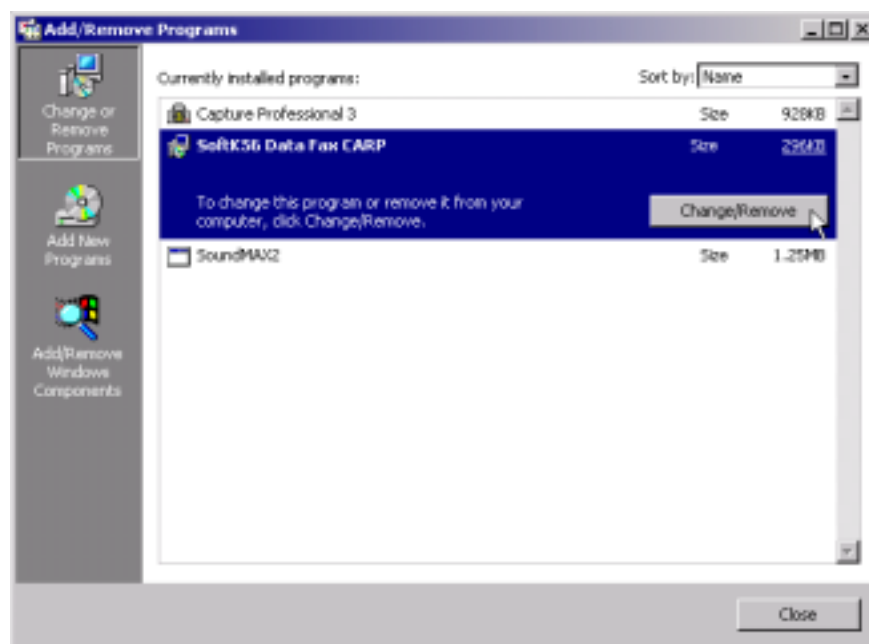


## 7.2 Uninstall in Windows 2K

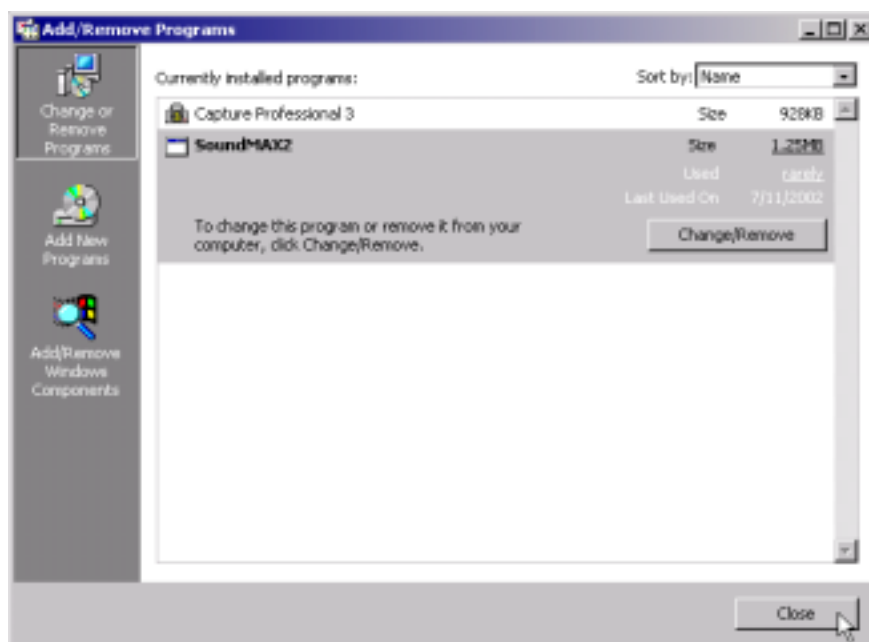
1. Please click **Start \ Setting \ Control Panel** on the desktop and double-click on the **Add/Remove Programs** icon.



2. Select **SoftK56 Data Fax CARP** from the list and then click **Change/Remove**.

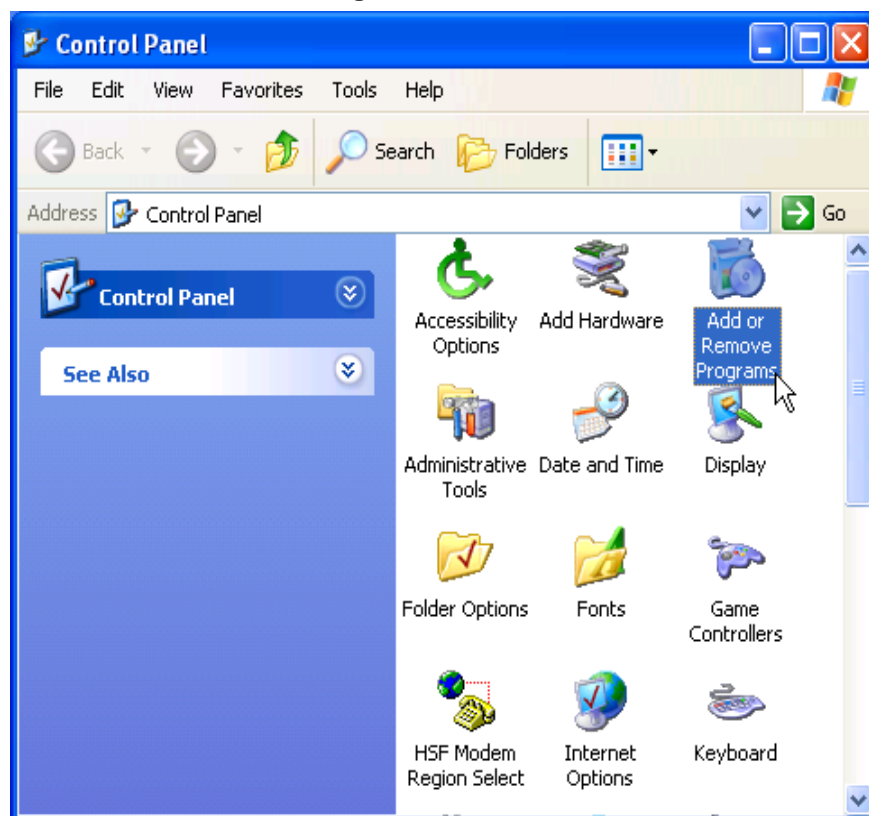


3. Click **Close** button to end this procedure.

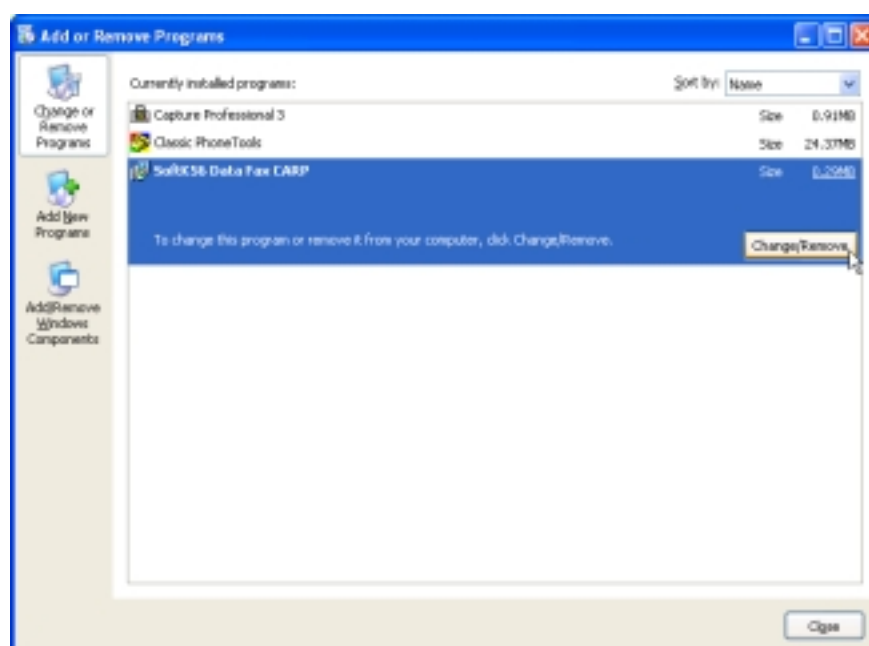


### 7.3 Uninstall in Windows XP

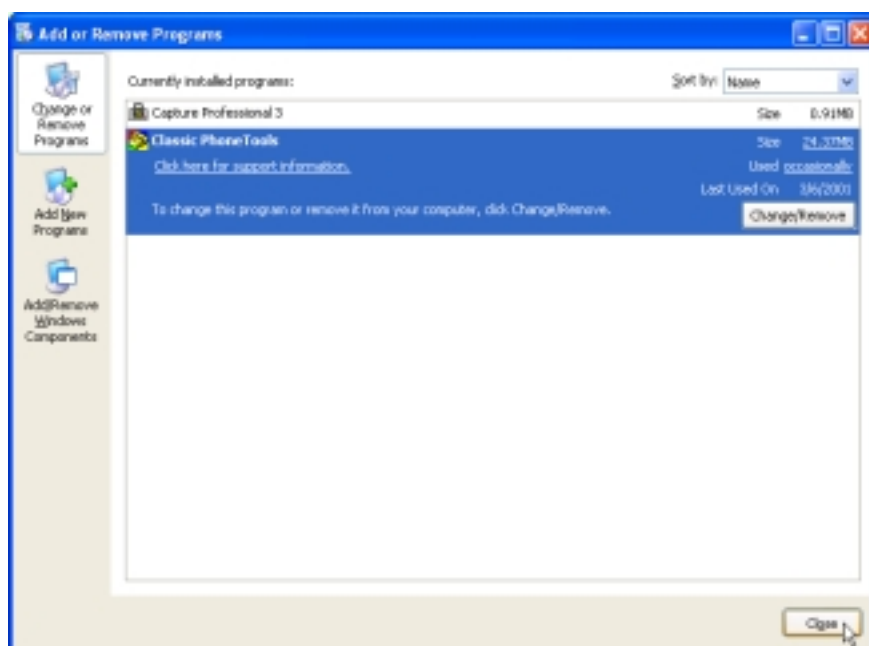
1. Please click **Start \ Setting \ Control Panel** on the desktop and double-click on the **Add or Remove Programs** icon.



2. Click **SoftK56 Data Fax CARP**. Then click **Change/Remove**.



3. Click **Close** button to end this procedure.





## Chapter 8 Troubleshooting

### If you failed to install your modem in Windows 95/98/ME

Make sure the COM port and IRQ Setting have been set correctly, and it doesn't conflict with another board installed in your computer.

- Move your cursor as following sequence **Start \ Settings \ Control Panel** and click **Control Panel**. Then double-click on the **System** icon. Click **Device Manager** and double click on the **Modem** icon. Please select modem model and click on the **Properties** button.
- Click on the **Resources** tab, then, **disable** the setting of **Use automatic settings**. Continue changing the setting of Setting based on from the list until No conflicts showing up, and then clicks **OK**.

### Modem will not dial-out

- Check your phone cable connected properly into LINE jack.
- If you use the Tone-dialing on a line, but required the Pulse-dialing method, please change the command T to P in your dial command line.

### Modem will not answer an incoming call

- Check your phone cable connected properly into LINE jack.
- By connect a Telephone to the PHONE jack. The attached telephone will ring if you try calling from another telephone line.
- Configured the modem to Auto-answer modem.

### No connection after modem dial out

- Remote modem may be not setting to answer mode, if you aren't hearing a high-pitch tone when remote modem answering.
- Perhaps poor-quality or noise telephone lines try another call.

### Data error when modem connection

- Make sure your software data format is match to remote side (for example: 8,N, 1).
- Make sure the modem flow control method is matched to communication software.
- Try another call may be poor quality or noise telephone lines.

### Fax and voice problems

- Be sure the Data Communication is installed and worked properly, otherwise check the mentioned procedure carefully and consult the Fax/Voice manual step by step.

### In win98 Hyper terminal problems

- Execute the fix file "Usb-hsf\win98\242004usa8" . if you want to run it at hyper terminal in win98 system.